



Patented

# PRO PLUG® SYSTEM for Wood

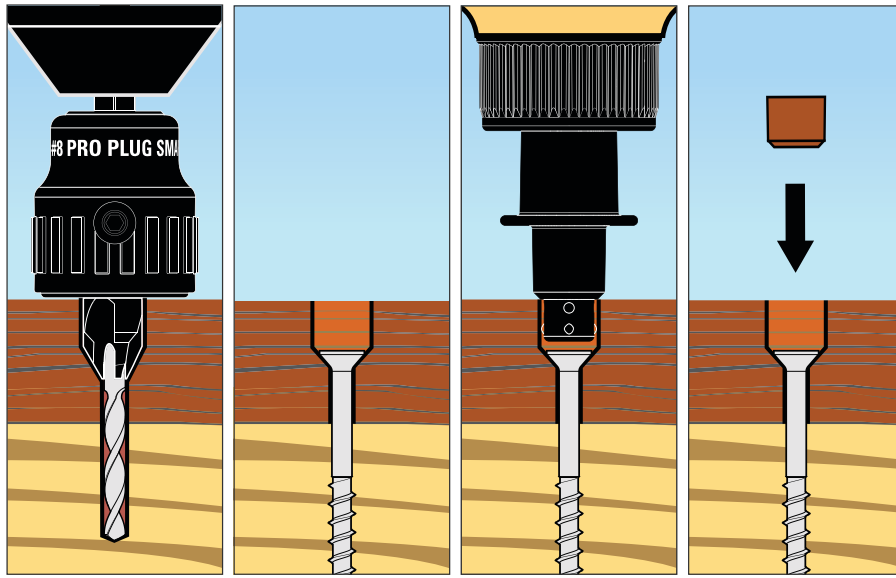
Integrated Plug Fastening System for Hardwood Decking

**Pro Plug® System for Wood** combines the strength of top-down fastening with the high end finish of face-grain wood plugs. This comprehensive system allows deck builders to drill, screw, glue, and plug all types of hardwoods in a fraction of the time required for traditional plug fastening methods.

All of the Pro Plug System for Wood components have been carefully and precisely engineered to maximize performance and provide the best finished result. The system features face-grain wood plugs, stainless fasteners (Grade 305 and Marine Grade 316, 8 x 1½" and 8 x 2½"), a pre-drilling and counterboring tool, and a glue nozzle that applies glue to the sidewall of the counterbored hole. See opposite for available wood types.

**Pro Plug Flooring Kits:** Indoor flooring kits with zinc plated fasteners are also available.





### 1. Drill

**Pro Plug Tool for Wood:** The patented Pro Plug Tool for Wood creates a screw-hole, countersink, and counterbore to match other system components. For use with decking materials between 3/4" and 1 1/4" thick.

### 2. Screw

**Pro Plug Fastener:** Decking Kits come with Grade 305 or Marine Grade 316 stainless steel deck screws. The fasteners are 1 1/4" or 2 1/2" long and have star drive recesses.

### 3. Glue

**Pro Plug Glue Nozzle:** The patented Nozzle coats the sides of the hole, where glue is needed, and attaches to any interior or exterior 4/8 oz. bottle of Titebond® wood glue or 4/8/16 oz. bottle of Elmer's® wood glue.

### 4. Plug

**Pro Plug Plugs:** Face grain wood plugs are approximately 3/8" in diameter and are available in many types of wood (see below). Plugs are inserted completely, with no need for sawing or chiseling. Light sanding is recommended.

### Component Packs

**Pro Plug Decking and Flooring Kits:** Plugs, screws, and the Glue Nozzle are available in **100 pc.**, **350 pc.** (100 sq ft) and **1050 pc.** (300 sq ft) packs with equal numbers of plugs and screws.

**Pro Plug Tool for Wood:** Countersinking and counterboring tool with three standard bits and a stub bit for plug-only installations.

**Pro Plug Tool Replacement Bits:** Five standard bits for the Pro Plug Tool.

**Screw Down Strength. Perfect Finish.**

Drill, Screw, Glue & Plug in under 20 seconds. The Pro Plug System is designed to save time and money while achieving a high-end, durable finish.



## Available plugs\*



\*Additional species and branded wood products also available. Pro Plug Flooring kits with zinc plated fasteners are available in American Cherry, American Walnut, Eastern White Pine, Genuine Mahogany, Poplar, Red Oak and White Oak. Other species of wood plugs can be made-to-order for larger projects.